

July 2024

[View this email in your browser](#)



Happy Summer!

We hope you all are enjoying the summer and get the chance to rest and relax. Since summer is a time of change and growth, the SIMAP team and the platform are evolving too. Particularly in light of the new SEC disclosure ruling in March--you can catch up on the updates in this article [SEC's historic climate disclosure rule – better late \(and light\) than never](#)--we have been busy updating SIMAP to best meet the needs of our users.

Read on to learn about [recent updates to SIMAP](#) (Scope 2 report, eCO2 utility emission factors, purchasing data update and keyword search, new GWP version, new user type) as well as the plans for our annual functionality update in fall of 2024.

SIMAP Team Changes

Over the past few months, the SIMAP team has undergone multiple changes.

First, Ciara Tennis has stepped into the role of SIMAP Program Coordinator. Ciara has worked with the SIMAP team for the past year and is enthusiastic about the opportunity to continue supporting leading organizations in their GHG reductions efforts.

Second, Dr. Allison Leach, co-creator of SIMAP and longtime program manager for UNH's work with the platform, has left UNH to join the [GHG Protocol](#) team at the [World Resources Institute](#), charged with making the first updates to the Corporate Standard in more than 20 years. Alley has been hugely influential in the world of higher education carbon management and she will be sorely missed here at UNH. And, we can't think of anyone better suited to guide relevant, actionable standards for greenhouse gas accounting guidance at the global level! Thank you and good luck, Alley!

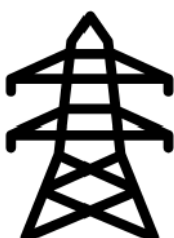
Recent SIMAP updates

We released several functionality updates this past month. These updates will give you more options for analyzing your emissions.

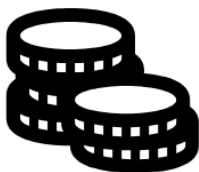
What's new in SIMAP?



Scope 2 report: You can now view all of your relevant scope 2 data in one place with the Scope 2 Report on the [Reports](#) tab.



eCO2 utility emission factors: You can now view the calculated eCO2 utility emission factors (combined CO2 + CH4 + N2O) in your account. *Note that there have been no changes in emission factors and previous calculations will not be affected. eCO2 factors cannot be edited.*



Purchasing data v1.2: We updated the purchasing data version to align with the EPA's most recent release of factors from their [Environmentally Extended Input-Output \(EEIO\) database](#). Version 1.2 includes updated emission factors based on 2021 dollars and new categories based on the NAICS categories. *We will reach out to institutions with existing purchasing data in their accounts later this week.*



Purchasing data keyword search: You can now search the summary and detail purchasing data categories with key words to help narrow down your options.



New GWP version: AR6. We incorporated the latest global warming potential version: Assessment Report 6. This has minor changes in global warming potential for most greenhouse gases to reflect improved scientific understanding and changes in atmospheric composition.



New user type: This new user type can only edit AND view a single campus/location. This could be useful in cases where you want to protect data confidentiality for other locations. *This feature only applies to Tier 2 accounts.*

Read about these and all other updates on the [SIMAP Update Log](#).

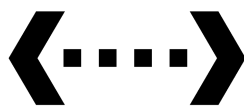
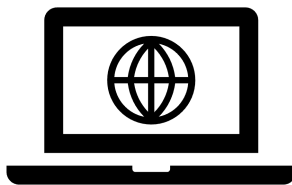
Coming soon: 2024 emission factors

Every year, we release a set of new annual emissions factors and other functionality updates. In the past, we have released these updates around February, but we have changed the release timeline to early fall. We found that releasing a new version of emission factors right before the spring reporting season put undue stress on users. Also, many of the databases that release emission factors changed their release schedule, making it impossible for us to quickly assimilate those changes into SIMAP.

2024 version of emission factors: Updated to the most current data sets, these emissions factors will include the latest electricity emissions factors, carbon contents, heating contents, and more.

Mobile FERA: As part of the 2024 emission factor updates, we will be adding FERA emission factors for scope 1 mobile sources. The placeholder for mobile FERA emission factors was added to SIMAP on July 29, but there will be no changes in emissions calculations until the 2024 emission factors are released.

Connect with us!



Summer times for SIMAP office hours: [Schedule a 15-minute one-on-one session](#) with the SIMAP team through our updated SIMAP office hours for August. You can register for a 15-minute time slot during our new summer times on Thursdays from 3-4pm ET. After scheduling, you will receive a calendar invite with a Teams meeting link.

Up to two 15-minute sessions per institution per quarter, or 8 total per year. Need

more support? Contact us at simap@unh.edu for additional support options beyond our office hours.

Register for courses for the UNH Carbon Footprinting Certificate



Register now for summer and fall courses for the [UNH Carbon Footprinting Certificate](#). You can take the virtual courses individually or as part of the certificate. The courses are taught by SIMAP team member Jenn Andrews. *Note: We recently changed the format so that each course is held across two 2-hour sessions on a Tuesday and Thursday.*

- [SIMAP: A Tutorial on a Carbon and Nitrogen Footprint Tool for Higher Education](#) | September 3 & 5
- [Calculating Your Scope 3 Carbon Footprint](#) | September 24 & 26
- [Introduction to Carbon Footprinting](#) | October 22 & 24
- [Carbon Footprinting: Data Collection and Calculations](#) | November 12 & 14

We can also offer custom trainings. Contact us at simap@unh.edu for more information.

Questions? Please contact us at simap@unh.edu, or sign up for a 15-minute time slot through our [SIMAP office hours](#), offered Thursdays 3-4pm ET.



Share



Tweet



Forward

SIMAP is powered by:



131 Main Street, Durham, NH 03824 | P: 603-862-8564 | F: 603-862-0785

Questions? Email us at simap@unh.edu

Copyright © 2024 Sustainability Institute, All rights reserved.

[unsubscribe from this list](#) [update subscription preferences](#)